



Lico 2P WtW Connector Product Launch Kit



Asam Jiang

Product Manager - IB

2015. Jan.

EVERY CONNECTION COUNTS

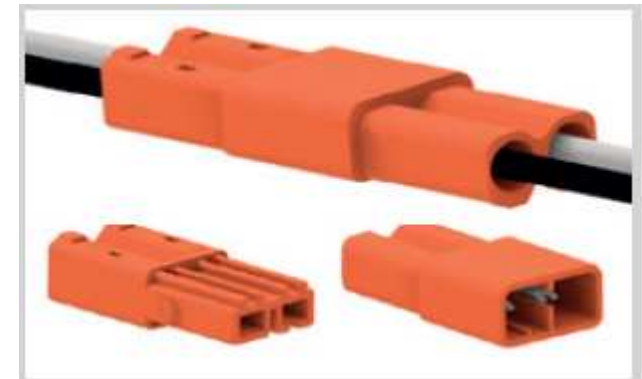


Product Description

Lico 2P Wire to Wire Connector is designed for the Indoor Application specially for Downlight.

This product is mainly used for the connection between power and light.

This Product does comply with UL / CSA 2459 standard, and also fulfills the touch safe requirement.



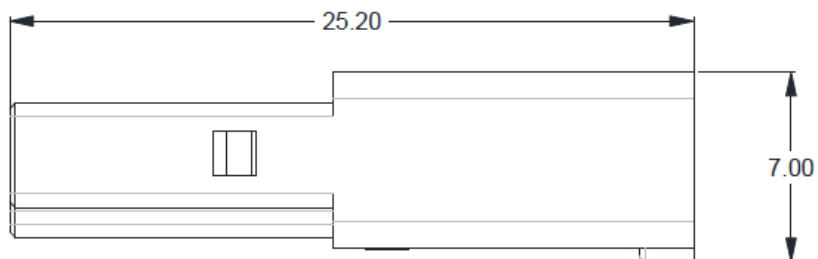
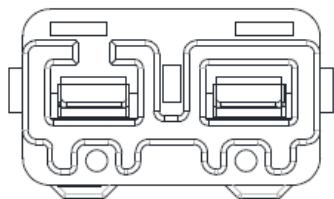
Product Features

- 2 position, Poke-in wiring method.
- Compact size design for space saving.
- Tool free design for field installation.
- Applicable Wire Size:
18AWG - 22AWG Solid or Tin-dipped Stranded
- Compliance to UL/CSA 2459
- Always EU RoHS/ELV compliant

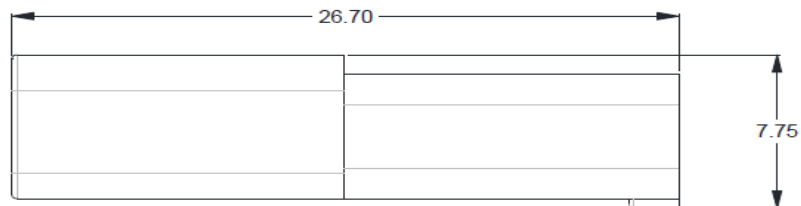
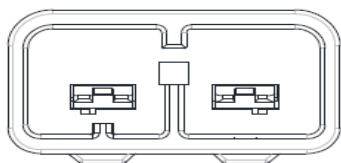
Product Dimension

Dimension

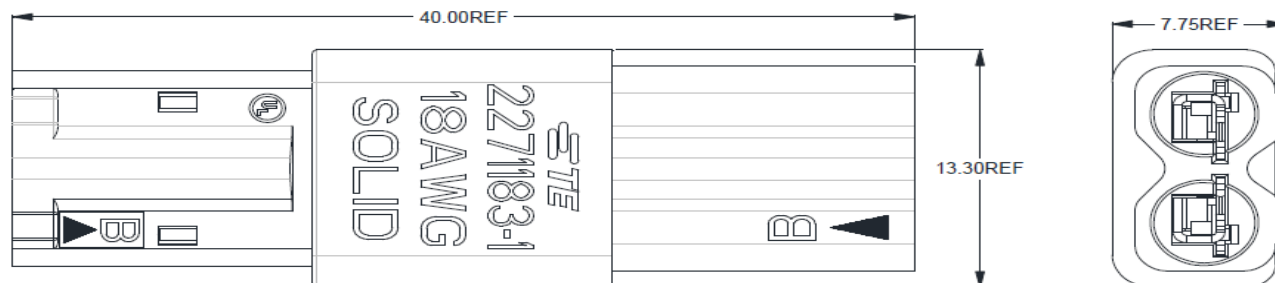
Plug (2271180-1):



Receptacle (2271183-1):



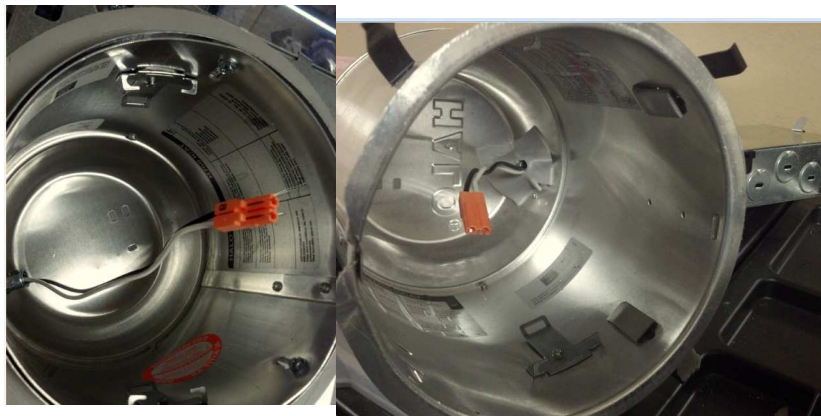
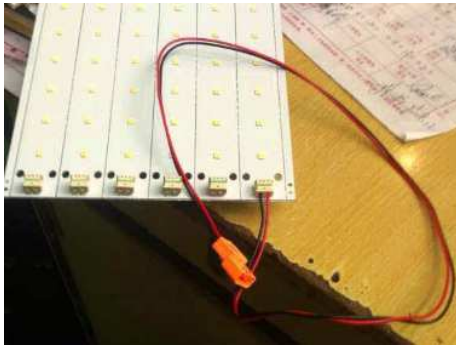
Mated Connector (2271203-1):



Focused MKT

- Downlight MKT (Specially For USA MKT)
- High-Level Commercial Lighting

- ✓ Pannel Lighting
- ✓ Can Lighting for Hotels



Performance Data

- Materials:
 - Housing : 94V0 rated high temperature resistant thermoplastic
 - Contact : Tin over nickel plated copper alloy
- Electrical:
 - Operating current: 18AWG 5A; 22AWG 4A
 - Operating voltage: 600 VAC Max
 - Dielectric withstanding voltage: 2200 VAC
- Mechanical:
 - Operating temperature: -40° C to +105° C
 - Wire retention: 44.5N. Minimum (For 18AWG)
 - 10 Cycles Durability

Standards & Specifications

- UL / CSA 2459
- UL and cUL recognized, File No. – File E308110, Vol. 2
- Application Spec. : 114-137020
- Product Spec. : 108-137020
- Lico product Flyer: TBA

USP & FAB

- Tool free design for field installation
- Poke-In Tech
- Easy for Repair
- Compact Size and Low Profile
- Fulfil the Touch Safe Request

- Saving total Installation Cost
- Saving Design Space
- Eliminate the Electric Shock Hazard -
(UL 2459 approval instead of UL1977)

Fulfil the Customer's Real Needs

Lico

TE Advantages	Problem your customer faced	Benefit	Competitor
结构小巧	没有空间放连接器	节省空间	尺寸不够小
Dual Contact Surface with Stopper	接触不稳定	可靠，不会烧坏灯具	单点接触
线材容易插入，不容易拔出。保持够大	线材很难插入，插入后端子容易掉。公母头直接保持力不够	节省安装时间，又避免了接触不良，提升效率	不易插入，保持力不够
UL2459 防触电安规认证（人手触碰）	意外触电危险造成人身伤害	免除触电危险	ONLY UL1977
免压接技术，容易快速现场安装	需要额外的压接工具，不方便现场安装，耗费时间	缩短加工流程，节省综合成本	传统公母头单独压接

Key Contact

Product Manager – TE Industrial AP

Asam Jiang



- Phone: +86 21 3398 0173
- Mobile: +86 138 2325 0179
- Email: Asam.jiang@TE.com



EVERY CONNECTION COUNTS