

# Lico 2 Position Wire to Wire Connector

## Key Feature

- 2 position, Poke-in wiring method.
- Compact size design for space saving.
- Tool free design for field installation.
- Applicable wire size: 18-22AWG solid or tin dipped stranded
- Compliance to UL/CSA 2459
- Always EU RoHS/ELV compliant

## Instruction

Lico wire to wire connector use Poke-in wiring technology, enable tool free installation for field application.

## Application

Indoor lighting, especially for down light.

## Electrical Performance

Current rating: 18AWG:5A Max.;22AWG:4 A Max.

Voltage rating: 600V AC Max.

Dielectric strength: 2200VAC

## Mechanical Performance

Operating Temperature: -40° C-+105° C

Durability: 10 cycles

## Material

Housing: PA,UL 94 V-0

Contact: Copper Alloy with Tin plating

## Standard and Specification

Application Specification: 114-137020

Product Specification: 108-137020

UL2459 Approval File E308110, Vol. 2

## Part Numbers:

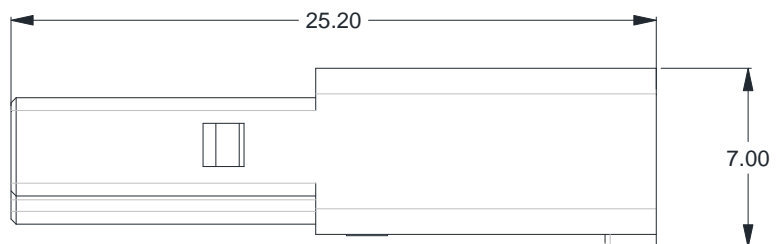
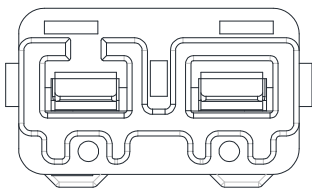
Plug: 2271180-1

Receptacle: 2271183-1

Mated Connector: 2271203-1

## Dimension

Plug (2271180-1):

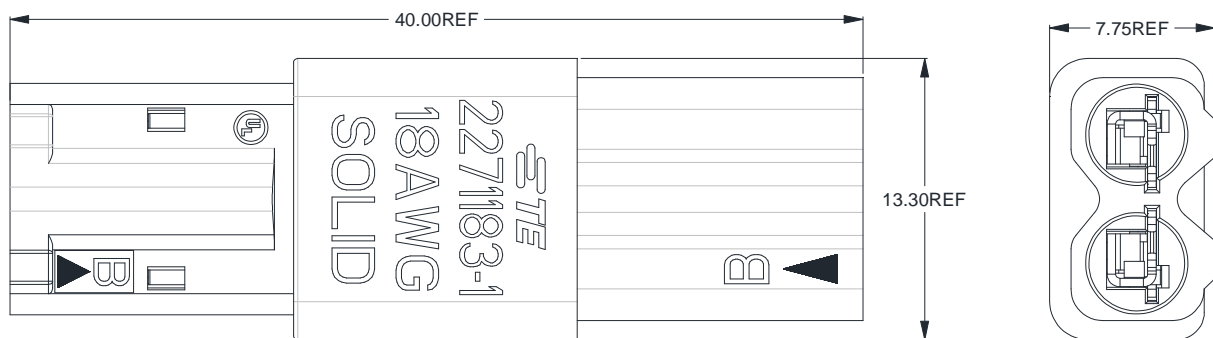


# Lico 2 Position Wire to Wire Connector

## Receptacle (2271183-1):



## Mated Connector (2271203-1):



## Installation Reference

