

MTP™ / MPO Multi-Fiber Cable Assemblies

Single-mode

Cable Assemblies



- High Density Fiber Management Solution
- 8 or 12 Fibers per connector
- Precision protrusion polished for minimum insertion loss and back reflection
- Push/Pull Connector Mating
- Plenum Rated Cable
- Meets Bellcore GR-1435-CORE* requirements
- Fan-Outs to discrete connectors available
- Standard and high performance available (see performance specs for details)

***Administered by Telcordia**

Date Modified: July 24, 2001

TS-1009-02
Sheet 1 of 3

Physical

Cable

Minimum Bend Radius: 30mm

Core/Cladding Diameters: 8.3/125µ m

Certification/Flame Rating: USA (UL)=OFNP (Plenum), Canada (CSA)=OFN/FT6

Standard & Low Loss Connectors

Ferrule Material: Glass Filled Resin

Guide Pins: Surgical Grade Stainless Steel

Polish: 1 micron (approx.) protrusion, APC

Rematability (per EIA-455-21A)*: 200

***Connectors cleaned at 5 cycle intervals. 3M recommends inspection and cleaning as necessary before each mating.**

Performance*1

	Standard (per termination)	Connectors	
			High Performance (per termination)
Typical Insertion Loss:	0.11-0.26 dB		0.02-0.08 dB
Maximum Insertion Loss:	0.75 dB		0.5 dB
Maximum Return Loss (better than):	-60.0 dB		-60.0 dB
*This applies when mated to another properly cleaned 3M MTP™ / MPO Assembly.			
<i>Opposite ends can be configured for various connectors as needed.</i>			
		Cable	
Wavelength	1310 nm		1500 nm
Attenuation:	<1 dB/km		<0.75 dB/km
Cable Attenuation @23°C, Typ:	0.5 dB/km		0.4 dB/km
Skew:	<45 ps/m		<45 ps/m

***1All data and results are based on testing and evaluations under laboratory conditions in a controlled environment. Actual results in the field may vary.**

Environmental

Operating Temperature Rating: -40°C to +85°C per Telcordia GR-1435-CORE

Storage Temperature Rating: -40°C to +85°C per Telcordia GR-1435-CORE

UL File No.: E86982

MTP is a trademark of Conec Ltd / ST is a trademark of Lucent Technologies

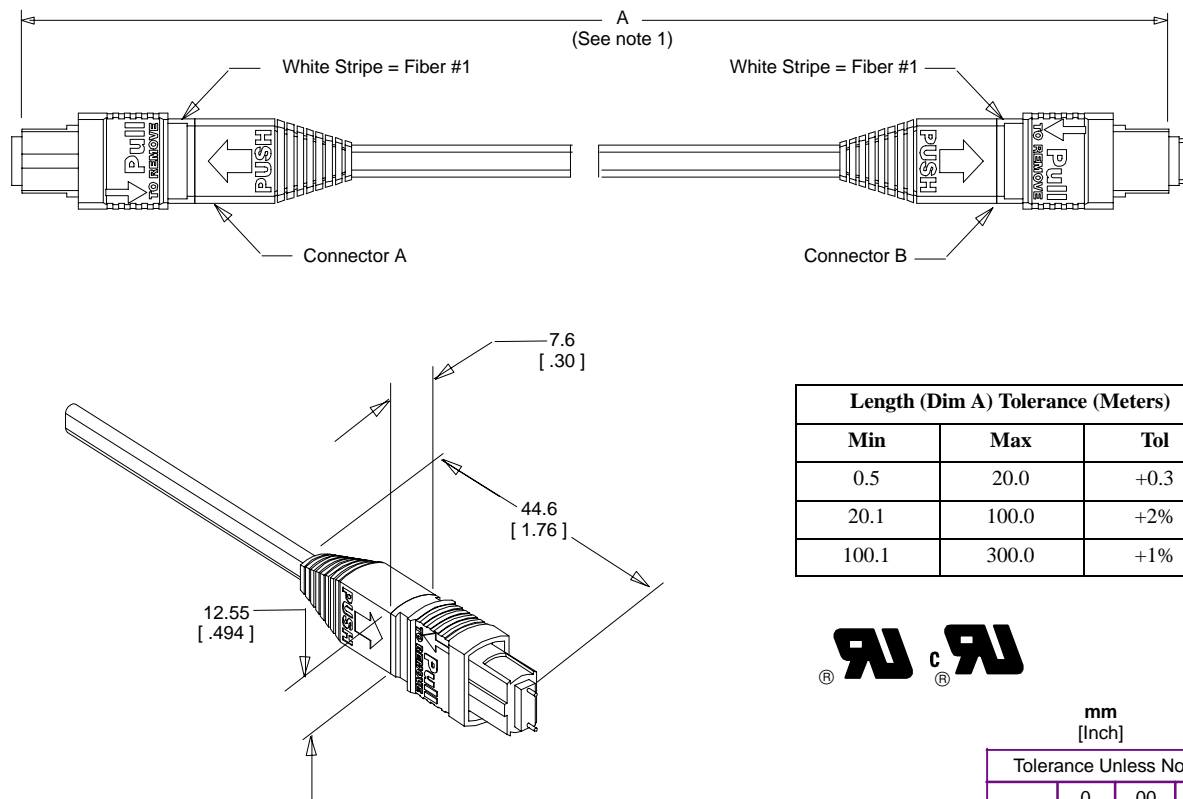
3M Interconnect Solutions Division

For technical, sales or ordering information call
800-225-5373

MTP™ / MPO Multi-Fiber Cable Assemblies

Single-mode

Cable Assemblies



Length (Dim A) Tolerance (Meters)		
Min	Max	Tol
0.5	20.0	+0.3
20.1	100.0	+2%
100.1	300.0	+1%



mm
[Inch]

Tolerance Unless Noted			
	.0	.00	.000
mm	±.3	±.15	

[] Dimensions for Reference only

Note:

1. All dimensions are in "mm" except Dim A is in meters.

Ordering Information

FXXX XXX-XX XX XXX.XX X.XX X X

Single-Mode Connector A

MPF = MTP™ Female
MPM = MTP™ Male
MLF = MTP™ Female High Performance
(used only with AR & AS 8 fiber cable)
MLM = MTP™ Male High Performance
(used only with AR & AS 8 fiber cable)
MTF = MT Female
(MT Ferrule Only, No housing)
MTM = MT Male
(MT Ferrule Only, No housing)

Single-Mode Connector B

(Option - select from connector A again or select Fanout options listed.)

SCU = SC UPC
SCA = SC APC
STU = ST™ UPC
FCU = FC UPC
FCA = FC APC-2mm key
FCB = FC APC-2.15mm key
LCU = LC UPC
LCA = LC APC
CBX = Cut Blunt
(Note: Replace "C" with "D" for duplex SC or LC connectors.)

Special Construction

Y = Yes drawing required
N = No drawing required

Fan Out

F = Fanout, non reinforced tubing
N = No Fanout

Dim B Fanout Section Length

*(meters, 0.5 meter max)
000 = non-fanout
VAR = Variable length fanouts
(drawing required)

Dim A Total Assembly Length (Meters)

Single-Mode Cable

AN = Unjacketed Ribbon
AO = Plenum Jacket
AR = Unjacketed Ribbon, High Performance
AS = Plenum Jacket, High Performance

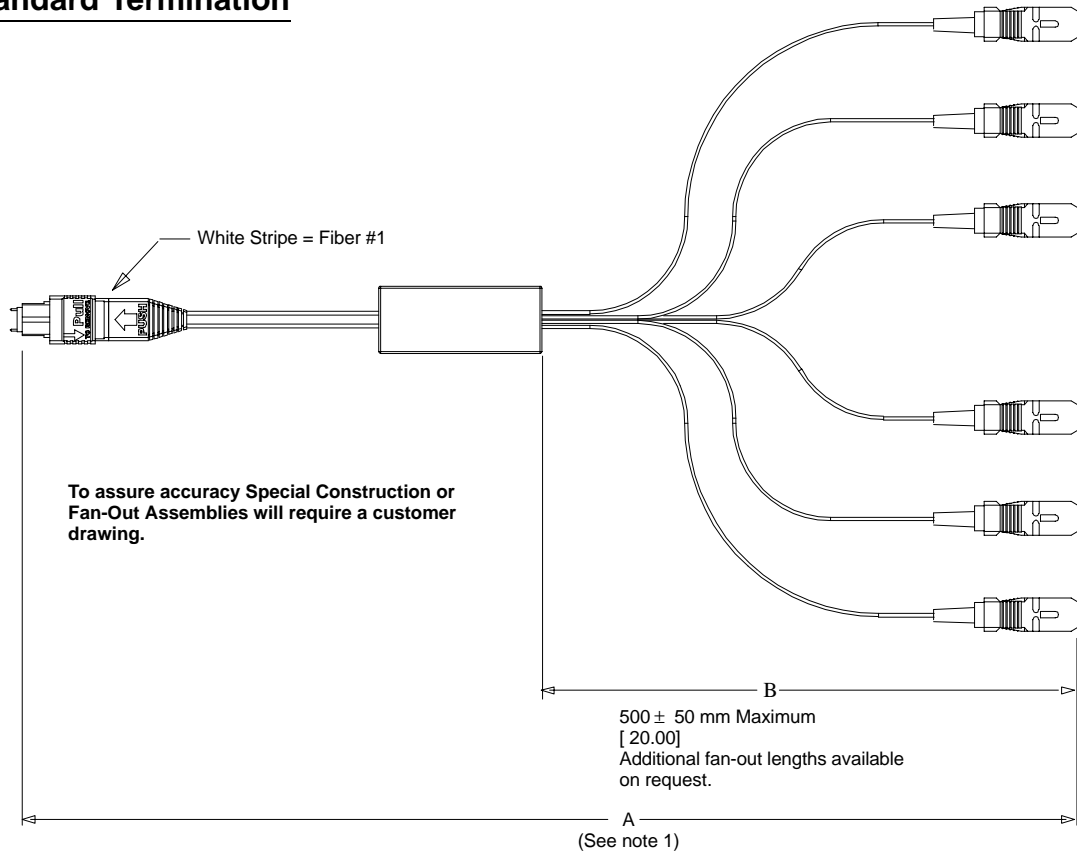
Number of Fibers

08 = 8
12 = 12

*Contact your 3M sales representative for special requirements.
MTP is a trademark of Conec Ltd / ST is a trademark of Lucent Technologies

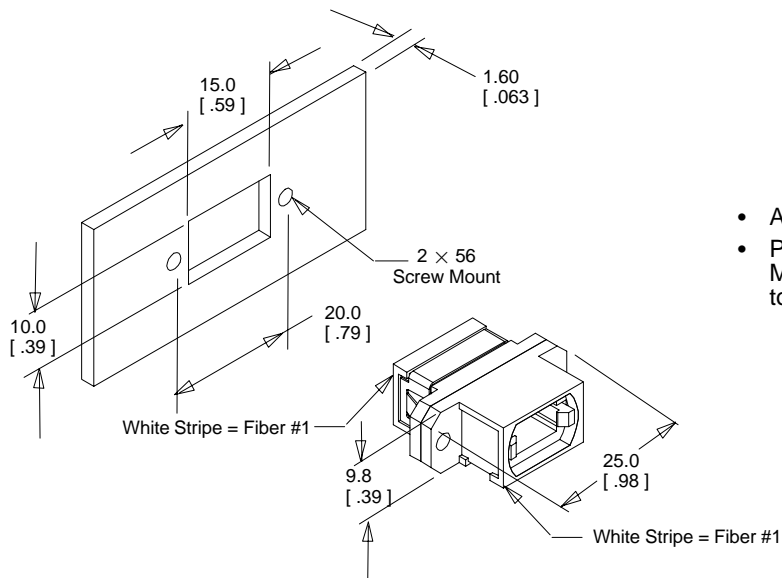
TS-1009-02
Sheet 2 of 3

Standard Termination



Note:

1. All dimensions are in "mm" except Dim A is in meters.



MTP™ Adapter (Order Separately)

- Accommodates bulkhead mating
- Provides alignment and latching for MTP™ Cable Assemblies to mate together.

MTP™ Adapter Ordering Information FA10-0000

MTP is a trademark of Conec Ltd / ST is a trademark of Lucent Technologies

TS-1009-02
Sheet 3 of 3