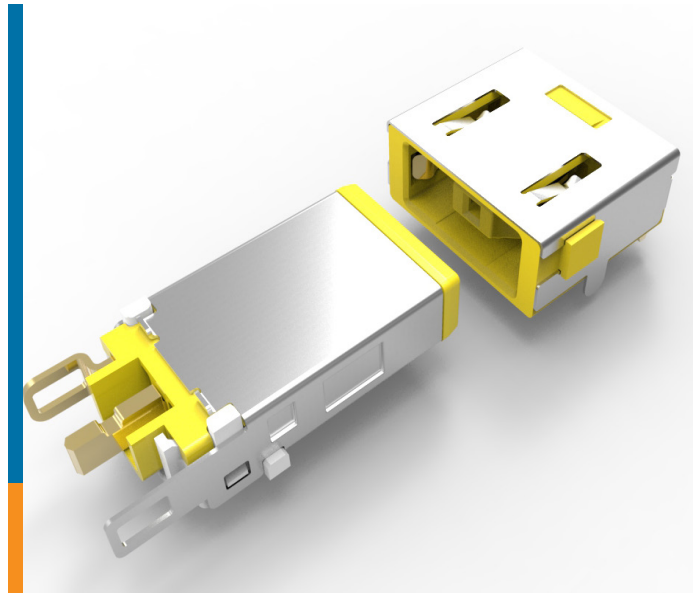


INTRODUCING

RECTANGULAR DC JACK CONNECTORS

- **Deliver power quickly to any battery operated device**
- **Designed for durability, offering a life cycle of up to 5,000 mating cycles**



TE Connectivity's (TE) rectangular DC jacks safely, reliably and quickly provide power to any battery operated device with up to 25V and 10.7A max ratings. The user-friendly, one-size-fits-all plug design works with all DC jack receptacles and various mounting options provide enhanced design flexibility to customize your application.

BENEFITS

- Deliver power quickly, compared to circular DC jacks, to any battery operated device with up to 25V and 10.7A ratings
- Designed for durability, offering a life cycle of up to 5,000 mating cycles
- Enable design flexibility with surface mount, cable and DIP mount options
- Increase power reliability with a receptacle designed with multi-contact louvers
- Promote safe connectivity with a design that engages the ground and internal detection switch before delivering power
- Support ease of use with a one-size-fits-all, reversible plug design that works with all 7A and 10.7A rectangular DC jack receptacles

ELECTRICAL

- Max Voltage: 25V DC
- Max Current: 7A or 10.7A
- Operating Temperature: -40 °C to +85 °C

MECHANICAL

- Mating Force: 3 kg max
- Unmating Force: 0.7 kg min
- Durability: 5,000 cycles min

APPLICATIONS

- Industrial / military laptops/computers
- Medicine pumps
- High capacity battery packs
- Barcode scanners
- Heart rate monitors
- Drones
- Toys
- Cameras
- Security radios

MATERIALS

- Housings: High temperature thermoplastic resin UL94 V-0
- Contacts: Gold plated copper alloy
- Shell: Tin plated copper alloy

LEARN MORE

[Rectangular DC Jack Product Listing Page](#)
[Battery Connectors and DC Jacks Overview Page](#)
[Rectangular DC Jack Presentation](#)
[Rectangular DC Jack Parts List](#)

TE Connectivity and TE connectivity (logo) are trademarks

Insert TE Authorized
Distributor logo here

